

# Emergency evacuation volcano eruption at Svartsengi

In the event of an eruption at Grindavík/  
Svartsengi **112** will carry out the following  
actions to ensure an emergency evacuation

SMS notifications to all mobile phones in the  
area in Icelandic, English

Activate the evacuation sirens located in  
Grindavík, Svartsengi and Blue Lagoon.

Announcement a order for evacuation on  
Tetra radio, talk group Gulur 2-3 in Icelandic  
and English

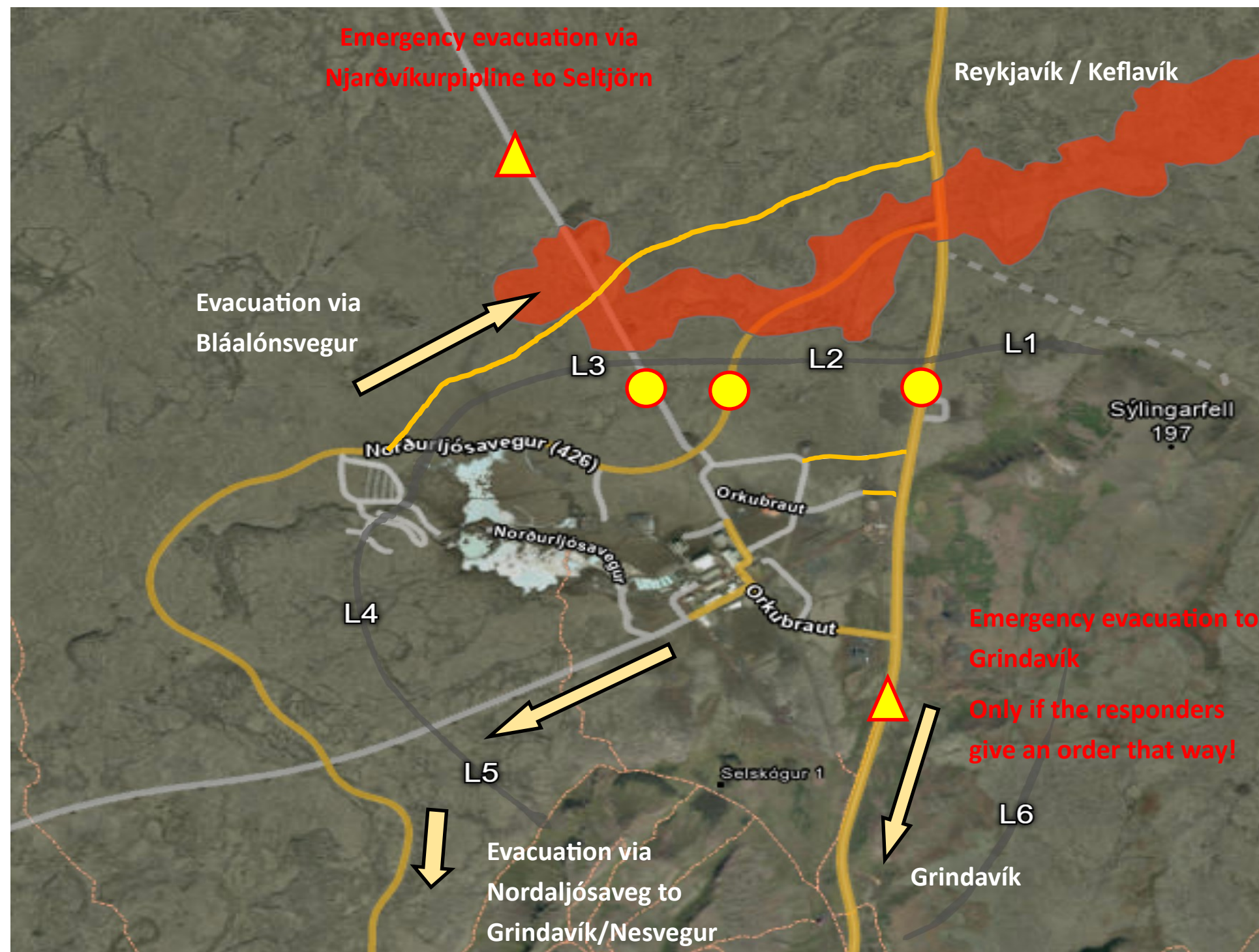
## Reaction to everyone in the area

Ensure the safety of yourself and other  
persons in the area

Evacuate the site and take cautiousness to  
ensure that everyone can escape the area

Obey the instructions of the evacuation  
manager/supervisors and/or emergency  
responders

Based on the threat, evaluate which evacua-  
tion route is preferred, as well as the evacua-  
tion route that comes with the SMS and/or is  
given on talk group Gulur 2-3



During an emergency evacuation, the following must be ensured:

- All staff, contractors and visitors in Svartsengi leave the area immediately - Managers confirm evacuation via talk group Gulur 2-3 to Vettvangsstjórn (VST)
- Ensure communication with those employees who cannot be reached to confirm evacuation
- Notify all accidents and hazardous crises immediately to closest first responder or **112**